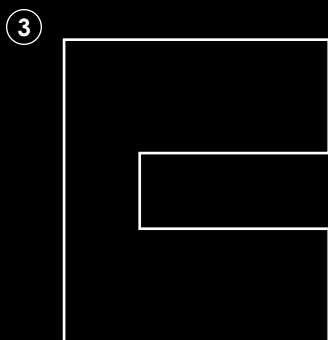
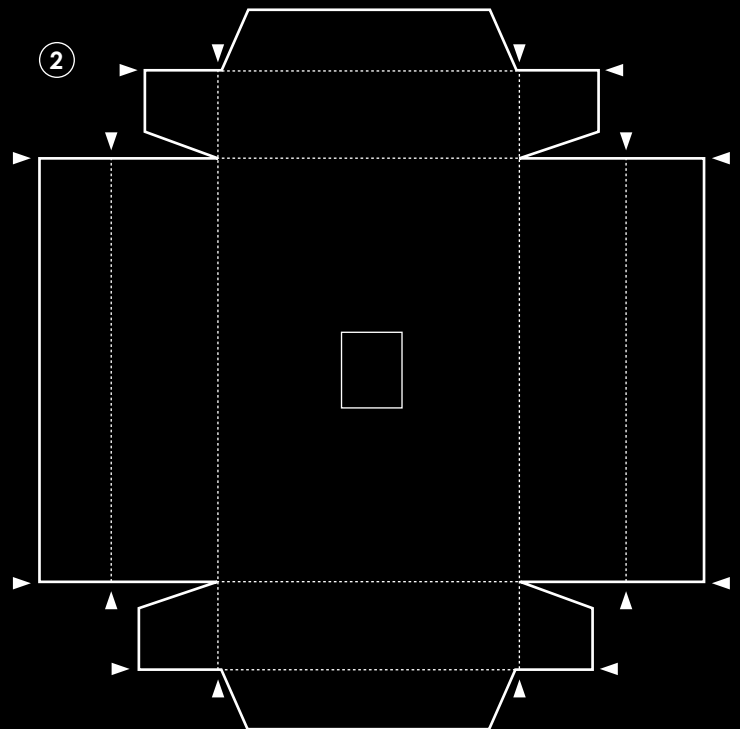
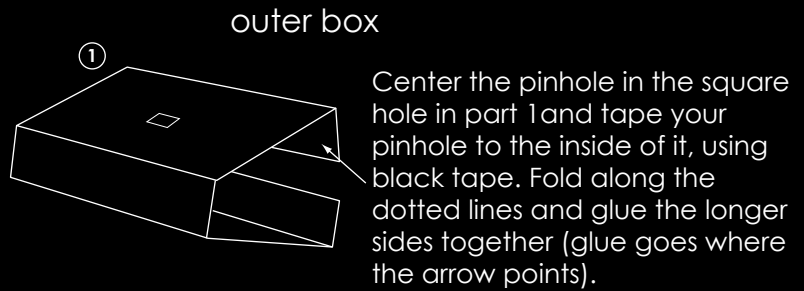
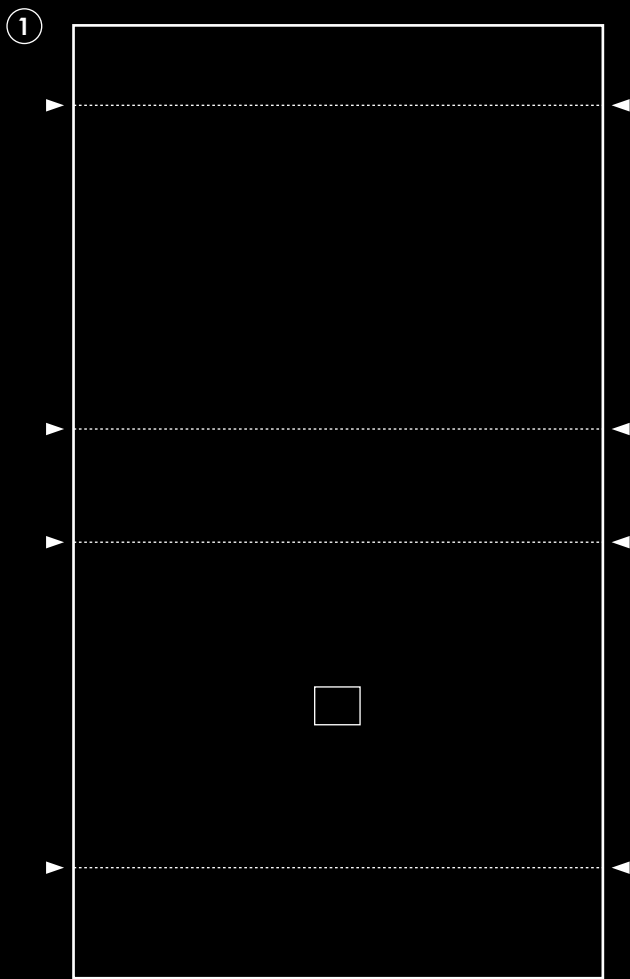
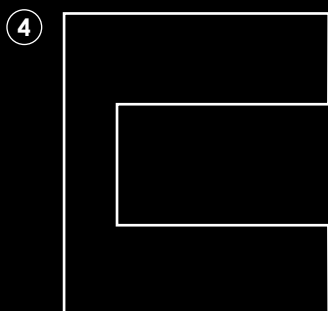
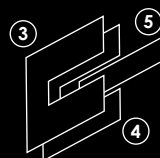


Make a pinhole from a piece of thin metal foil, for instance an aluminium food container. ½" x ½" should be a nice enough size. Make a tiny hole in the foil by pushing the tip of the tip of a sawing needle through the foil; the hole should ideally be a little less than 1/100 of an inch. Sand off any burr using very fine emery paper.

Glue this page to a sheet of black cardboard. Cut out parts 1-6. Also cut the square holes for the pinhole in parts 1 and 2 according to the layout. Mark the foldings, i.e. the dotted lines, using, for instance the back side of the blade of a knife (scalpel or sharpie knife).

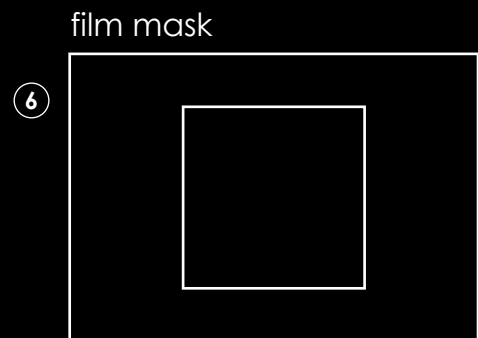
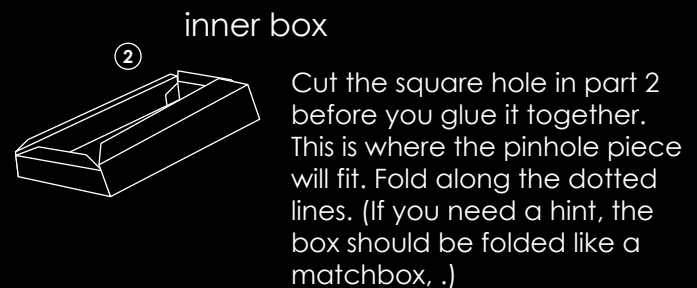


shutter



Tape or glue the shutter to the front side of the camera. Center the shutter piece in front of the pinhole. Part 5 is the shutter itself and should fit nicely into part 4.

Save this stage for last.



To be taped to the top (open side) of the inner box.  
(Note! This is a de luxe option.)